

EVIO Labs Medford (pka Kenevir Research)  
 540 East Vilas Road, Suite F, Central Point, OR 97502  
 541-668-7444 / OLCC 010-1001626980D / www.EVIOLabs.com

**Elektra**  
*Cascadia Blooms Nursery LLC*  
 Info Only



**Confident Cannabis ID:** 1812KR0036.2921  
**Sample ID:** M180986-02  
**Matrix:** Hemp  
**METRC Batch #:**  
**Sampling Method/SOP:** SOP.T.20.010  
**Date Sampled:** 12/10/18 09:00  
**Date Accepted:** 12/10/18  
**Results Valid Until:** 12/10/19  
**Harvest/Process Lot ID:**

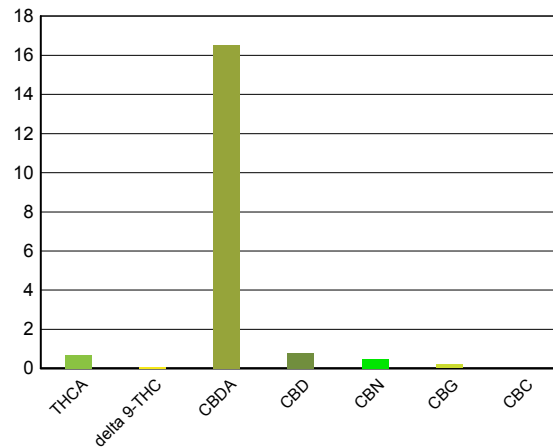
**Batch ID:**  
**Batch Size (g):**  
**Unit for Sale:**  
**Harvest/Production Date:**

## Cannabinoid Analysis


Date/Time Extracted: 12/11/18 14:08  
 Date/Time Analyzed: 12/11/18 21:27

Analysis Method/SOP: SOP.T.40.020

Cannabinoids	LOQ(%)	mg/g	% weight	Cannabinoid Profile
<b>Total THC</b> <small>((THCA*0.877)+Δ9THC)</small>		<b>6.66</b>	<b>0.666</b>	
<b>Total CBD</b> <small>((CBDA*0.877)+CBD)</small>		<b>153</b>	<b>15.3</b>	
THCA	0.050	6.88	0.688	
delta 9-THC	0.050	0.62	0.062	
delta 8-THC	0.050	< LOQ	< LOQ	
CBDA	0.050	165	16.5	
CBD	0.050	7.85	0.785	
CBN	0.050	4.79	0.479	
CBG	0.050	1.99	0.199	
CBC	0.050	< LOQ	< LOQ	
Sum of tested Cannabinoids	0.050	187	18.7	



"Total THC" and "Total CBD" are calculated values and are an Oregon reporting requirement (OAR 333-064-0100). For Cannabinoid analysis, only delta 9-THC, THCA, CBD, CBDA are ORELAP accredited analytes. Cannabinoid values reported for plant matter are dry weight corrected; Oregon Water Activity action level is 0.65Aw; Samples above limit will be highlighted RED; FD = Field Duplicate; LOQ = Limit of Quantitation.

 Ian Riversong  
 Laboratory Director - 12/28/2018

EVIO Labs Medford (pka Kenevir Research)  
 540 East Vilas Road, Suite F, Central Point, OR 97502  
 541-668-7444 / OLCC 010-1001626980D / www.EVIOLabs.com

## Quality Control

**Batch: M18L046 - ODA Exhibit B/ SOP.T.30.050 Prep for Cannabinoids**

Blank(M18L046-BLK1)			Extracted: 12/11/18 14:08		Analyzed: 12/11/18 16:31		
Analyte	Result	LOQ	Recovery Limits	Analyte	Result	LOQ	Recovery Limits
THCA	< LOQ	0.050 (%)	< LOQ	delta 9-THC	< LOQ	0.050 (%)	< LOQ
delta 8-THC	< LOQ	0.050 (%)	< LOQ	CBDA	< LOQ	0.050 (%)	< LOQ
CBD	< LOQ	0.050 (%)	< LOQ	CBG	< LOQ	0.050 (%)	< LOQ
CBN	< LOQ	0.050 (%)	< LOQ	CBC	< LOQ	0.050 (%)	< LOQ
Sum of tested Cannabinoid:	< LOQ	0.050 (%)	< LOQ				

LCS(M18L046-BS1)			Extracted: 12/11/18 14:08		Analyzed: 12/11/18 16:49		
Analyte	% Recovery	LOQ	Recovery Limits	Analyte	% Recovery	LOQ	Recovery Limits
THCA	97.9	(%)	70-130	delta 9-THC	99.5	(%)	70-130
CBDA	99.3	(%)	70-130	CBD	98.0	(%)	70-130



Ian Riversong  
 Laboratory Director - 12/28/2018